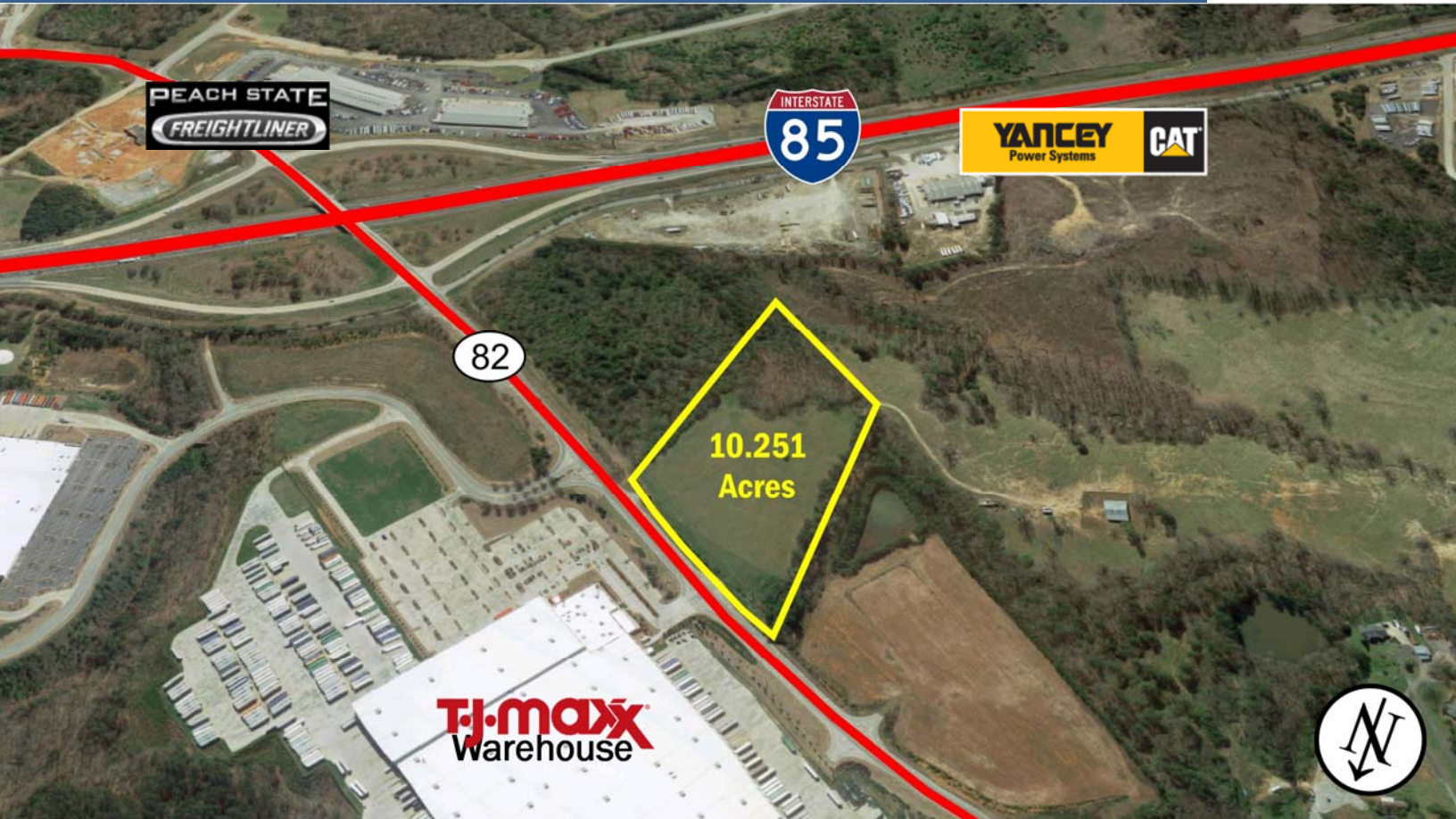


FOR SALE

2306 HOLLY SPRINGS ROAD
JEFFERSON, GA 30549

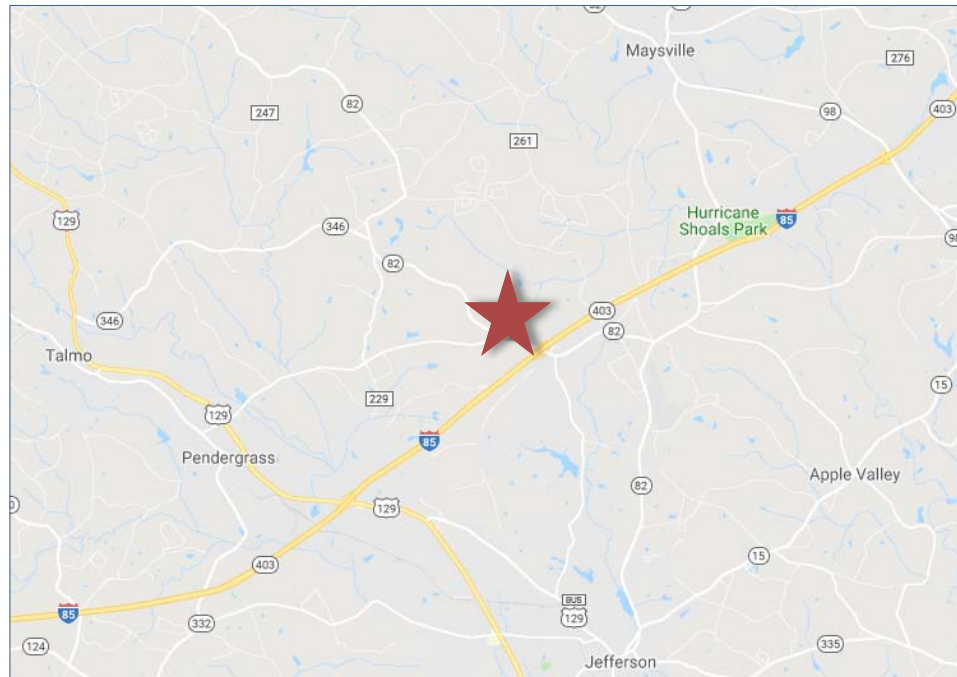
HUGHES
COMMERCIAL REAL ESTATE



ASKING PRICE
\$1,640,160
(\$160,000/ACRE)

PROPERTY INFORMATION

- 10.251 Acres
- Industrial Zoned (Commercial Potential)
- 0.3 Miles from I-85
- Frontage Along GA-82 (Holly Springs Rd)
- Cleared rough graded site



HUGHES
COMMERCIAL REAL ESTATE

HUGHES
COMMERCIAL
REAL ESTATE

1303 Hightower Trail
Suite 240
Atlanta, GA 30350
770.559.1099

Tommy Hughes
770.559.1099 x8805
404.218.5080
thughes@hughes-cre.com

Stuart Bracey
770.559.1099 x8809
404.664.5321
stuart@hughes-cre.com

